



Chandler, Arizona
PHONE (800) 380-0103

EQ# 578233

MODEL S6D10X24

SERIAL NUMBER S24008

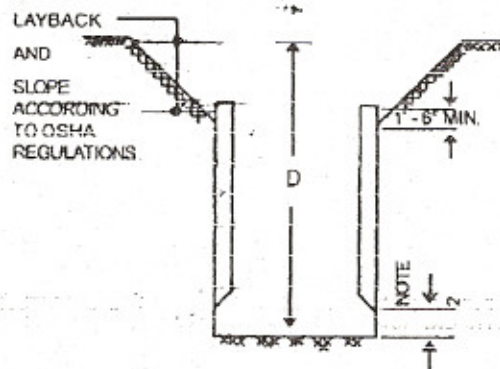
REFERENCE TO OCCUPATIONAL SAFETY AND HEALTH ADMINISTRATION RULES AND REGULATIONS, 29 CFR, NO 209, PART 1926, SUBPART P

SHIELD SIZE		PSF RATING	MAXIMUM ALLOWABLE DEPTH OF CUT (FEET)		
			D		
HEIGHT (FEET)	LENGTH (FEET)	MAXIMUM LATERAL EARTH PRESSURE CAPACITY AT TRENCH BOTTOM IN POUNDS PER SQUARE FOOT	SOIL TYPE TO BE EXCAVATED		
			TYPE A STIFF COHESIVE SOIL 25 PSF PER FOOT OF DEPTH.	TYPE B MEDIUM COHESIVE TO GRANULAR SOIL 45 PSF PER FOOT OF DEPTH.	TYPE C SOFT COHESIVE TO SUBMERGED SOIL 60 PSF PER FOOT OF DEPTH.
10	24	1200	48	27	20

LIMITATIONS IN USE OF TABLE

- TRENCH SHIELD TO BE ASSEMBLED AND INSTALLED AS SHOWN AND IN ACCORDANCE WITH MANUFACTURER'S INSTRUCTIONS.
- EXCAVATION 2 FEET BELOW BOTTOM OF SHIELD IS PERMITTED WHEN NO LOSS OF SOIL FROM BEHIND OR BELOW THE BOTTOM OF SHIELD IS ENCOUNTERED. SEE PARAGRAPH 1926.652 (c)(2)(i) THE COMPETENT PERSON SHALL MAKE THE DETERMINATION FOR COMPLIANCE. SUDDEN SHIFTING OF THE SHIELD VERTICALLY SHALL BE AVOIDED.
- CONSULT MANUFACTURER WHEN RESTRICTION ON NOTE 2 IS NOT MET
- ADDITIONAL SHIELDS MAY BE STACKED WITH NO PENALTY IN DEPTH OF CUT AS LONG AS THE RATING OF THE BOTTOM SHIELD IS NOT EXCEEDED.
- DEPTHS OF CUTS SHOWN ARE BASED ON EXAMPLES OF VARIOUS SOIL CONDITIONS. VERIFY ACTUAL SOIL PRESSURES PRIOR TO EACH USE.
- ANY MODIFICATIONS OR ALTERATIONS NOT ALLOWED UNLESS APPROVED IN WRITING BY EFFICIENCY PRODUCTION, INC.
- CONTRACTOR'S COMPETENT/QUALIFIED PERSON SHALL BE RESPONSIBLE FOR MONITORING SOIL CONDITIONS.
CONTINUED ON REVERSE SIDE

DESCRIPTION	DESCRIPTION	DESCRIPTION
Clay, silty clay, sandy clay, clay loam, unconfined compressive strength of 1.5 tons per square foot or greater. (see note 8 on reverse side)	Clay with unconfined compressive strength greater than 5 TSF but less than 1.5 TSF, cohesionless gravel, silt, silt loam or sandy loam (see note 9 on reverse side)	Clay with unconfined compressive strength less than .5 TSF submerged sand, clay or fractured rock that is not stable. (see note 10 on reverse side)



CERTIFIED BY:
EFFICIENCY PRODUCTION, INC.
FEB. 27, 2004

COPYRIGHT:
1991 EFFICIENCY PRODUCTION, INC.
ALL RIGHTS RESERVED

MANUFACTURED UNDER ONE OR MORE OF THE FOLLOWING U.S. PATENT NUMBERS:
4,090,365-4,114,383-4,259,028
ONE OR MORE OF THE FOLLOWING CANADIAN PATENT NUMBERS: 1,062,683-1,062,684

USE THIS PRODUCT ONLY IN ACCORDANCE WITH APPLICABLE FEDERAL, STATE, OR LOCAL LAWS

Any use of this product not specifically described on this certificate could cause cave-in, collapse, or structural failure resulting in death or serious injury.